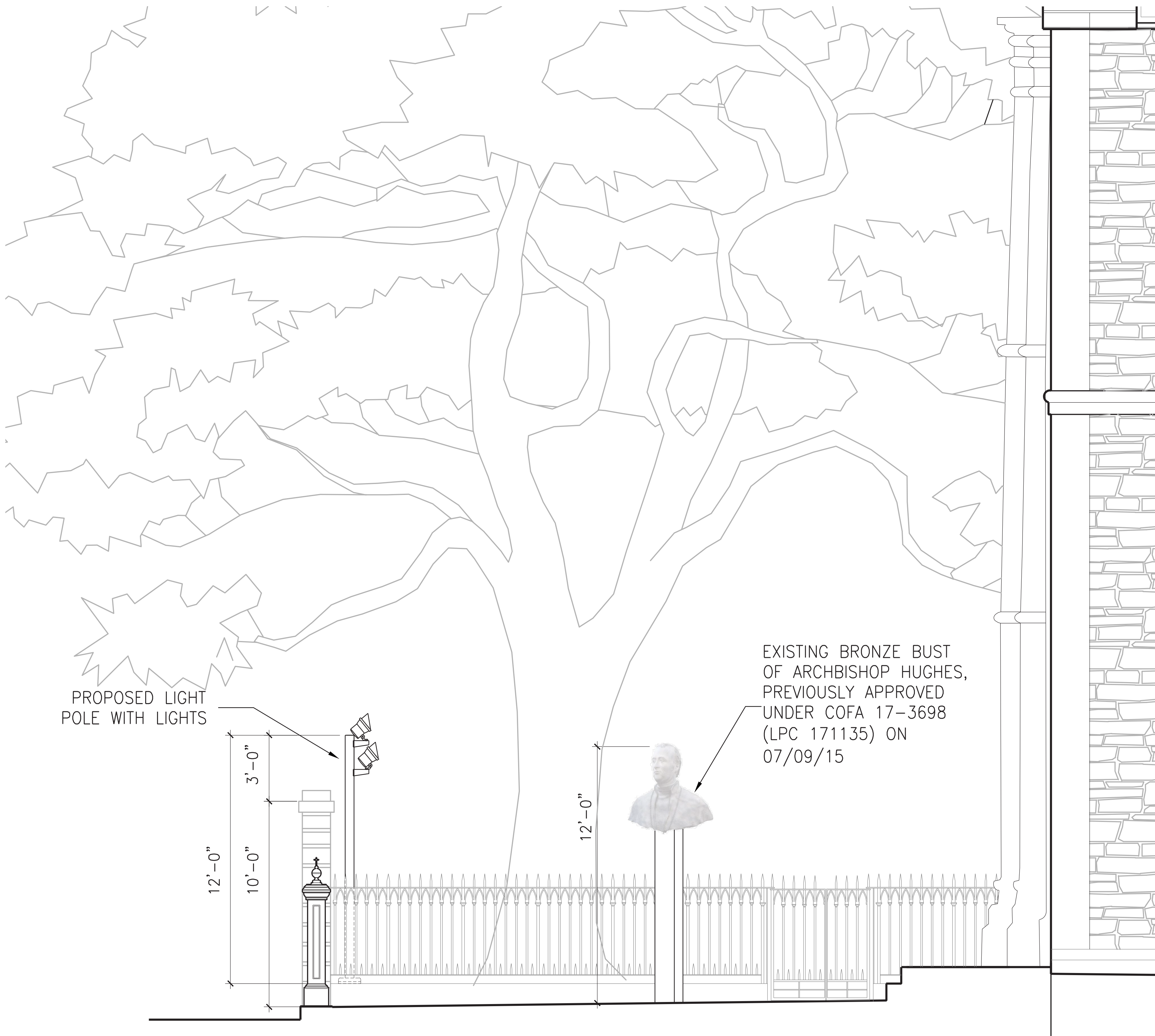


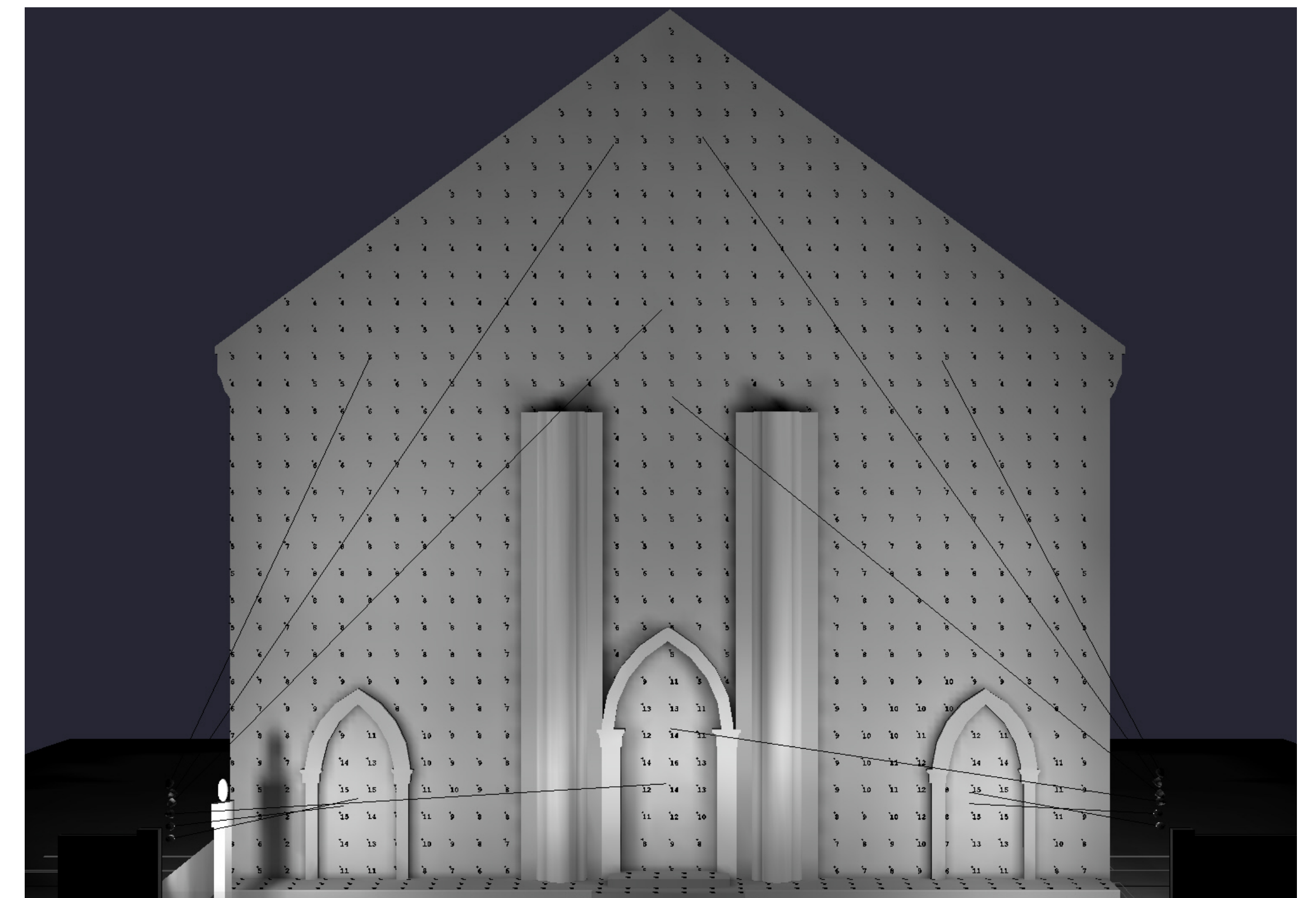
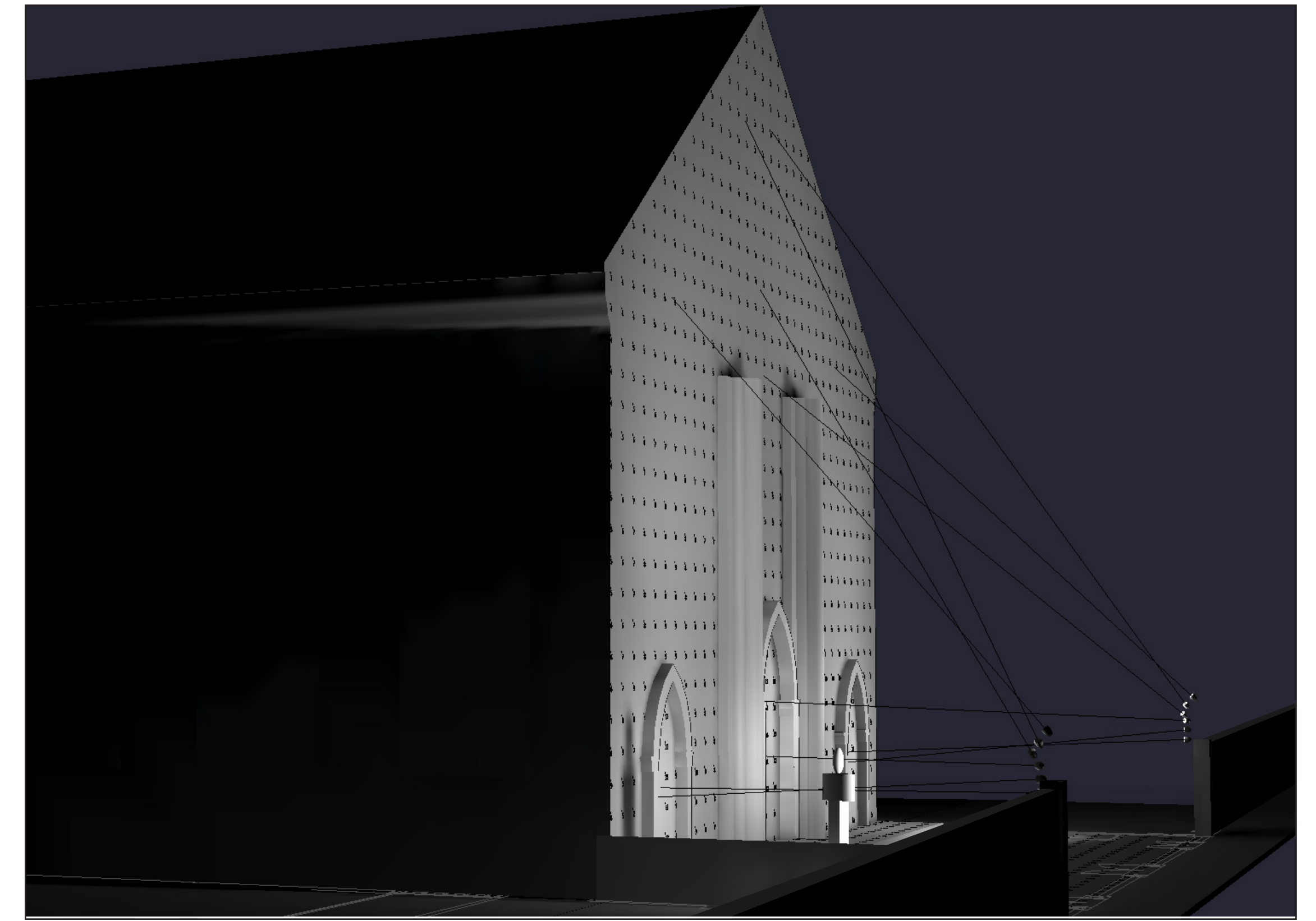
A COURTYARD LIGHTING PLAN
 SCALE: 1/8" = 1'-0"



A EAST ELEVATION
SCALE: NTS



A COURTYARD SOUTH ELEVATION
SCALE: NTS



PROPOSED LIGHTING DESIGN: POLE LIGHTS

- LIGHT POLES LOCATED AWAY FROM HISTORIC PLAZA
- LOCATED INSIDE CEMETERY WALLS
- POLES ARE REMOVABLE
- POLE HEIGHT WAS SELECTED TO MINIMIZE VIEW OF FIXTURES FROM THE PUBLIC WAY WHILE PROVIDING SHADOW FREE ILLUMINATION OF THE FACADE



PROPOSED ST. PATRICK'S OLD CATHEDRAL WITH LIGHT POLES FROM MOTT STREET



A. PROPOSED COURTYARD OF ST. PATRICK'S OLD CATHEDRAL



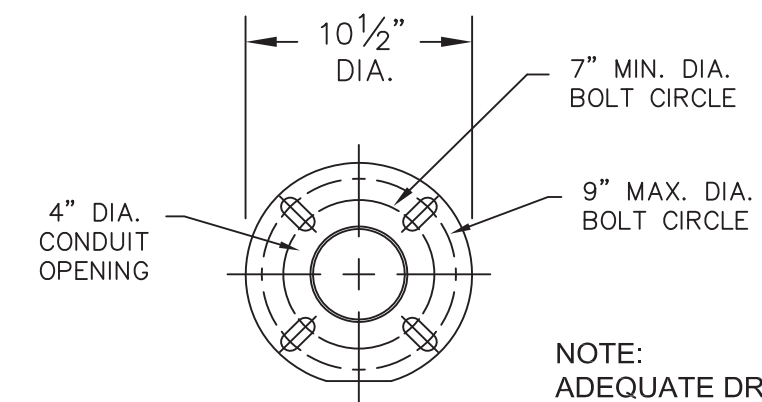
B. PROPOSED COURTYARD OF ST. PATRICK'S OLD CATHEDRAL



C. PROPOSED COURTYARD OF ST. PATRICK'S OLD CATHEDRAL FROM MOTT STREET

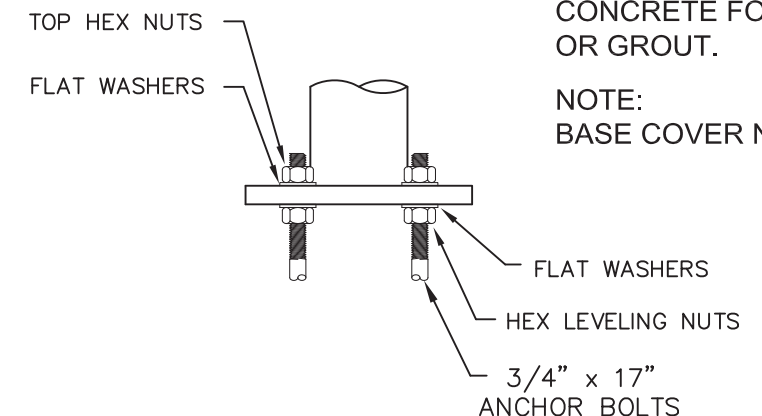


D. PROPOSED COURTYARD OF ST. PATRICK'S OLD CATHEDRAL FROM MOTT STREET



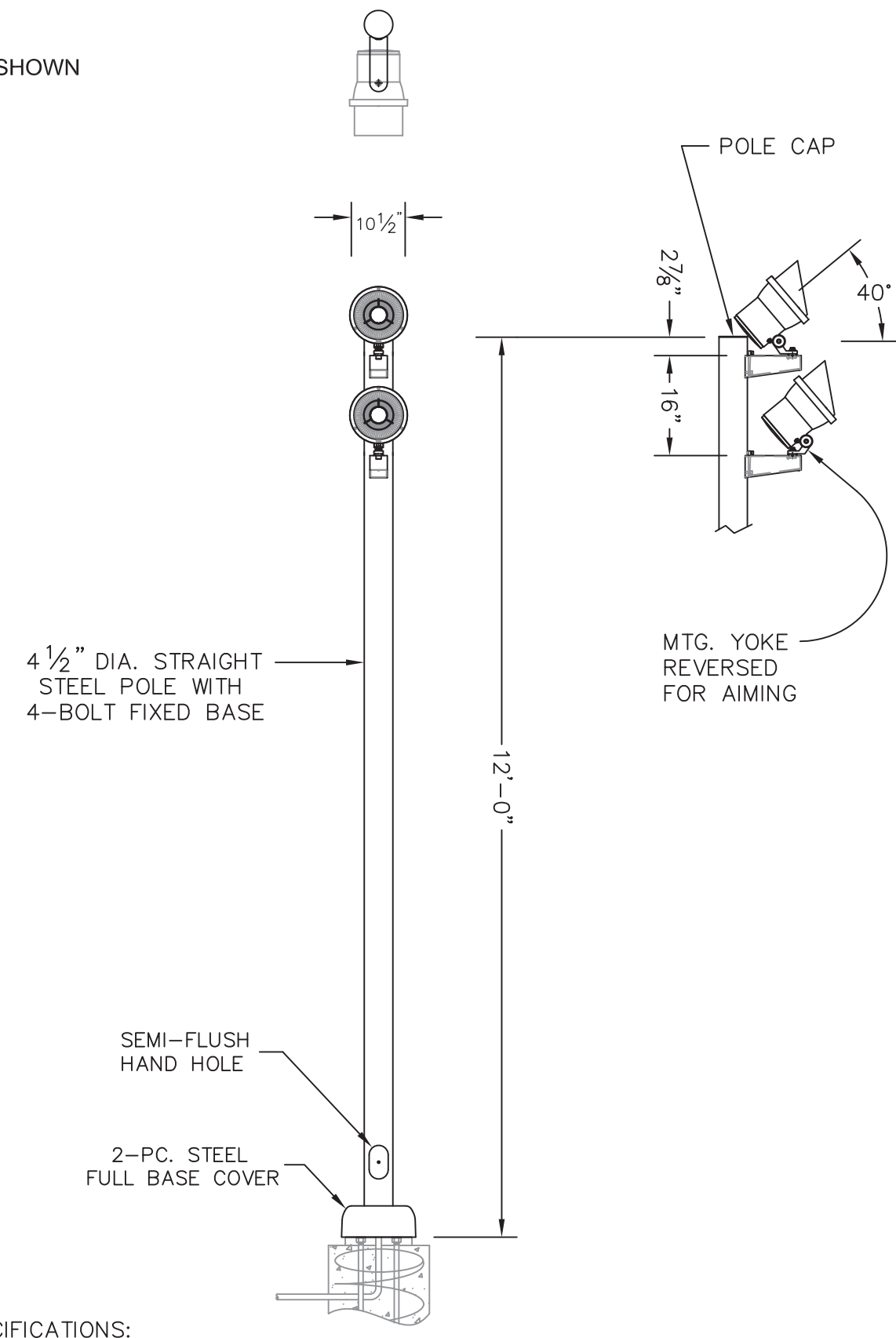
NOTE:
ADEQUATE DRAINAGE
MUST BE PROVIDED IN
CONCRETE FOUNDATION
OR GROUT.

NOTE:
BASE COVER NOT SHOWN



BASE DETAIL

STANDARD (4) 3/4" x 17"
ANCHOR BOLTS & MTG. TEMPLATE
SUPPLIED WITH POLE
OR IN ADVANCE.



- NOTES:
- LUMINAIRE (6) #7793LED - MODIFIED - SEE SPECIFICATIONS:
 - 73.5W 4000K LED (83 TOTAL SYSTEM WATTS) EACH.
 - 120-277V ELECTRONIC 0-10V DIMMING LED DRIVER INSIDE EACH LUMINAIRE.
 - (6) BEGA ACCESSORY #758 180° GLARE SHIELD.
 - (6) BEGA ACCESSORY #379 MOUNTING ARMS

TYPE: _____

SUBMITTAL APPROVAL			CAT NO.: (6) 7793LED - Custom 12' pole	BEGA 1000 Bega Way Carpinteria, Ca. 93013 (805) 684-0533
APPROVED BY:	DATE:	PROJECT: St. Patrick's Cathedral	LOCATION: New York, NY.	
REV.	DATE	DESCRIPTION	DRAWN: Bob Mc DATE: 9/23/15 File Name: # 12886	
This print contains confidential information which is the property of BEGA U.S. By acceptance this information, the borrower agrees that it will not be used for any other purpose other than that which is was loaned.				

PROPOSED LIGHT POLE

Compact floodlight

Housing: Luminaire constructed of a one piece die-cast aluminum housing. LED module paired with inner reverse-tapered casting to provide maximum heat transfer to outer housing. Die castings are marine grade, copper free ($\leq 0.3\%$ copper content) A360.0 aluminum alloy.

Enclosure: Optical system consists of a reflector of pure anodized aluminum. The lens and optical assembly are secured by a die cast aluminum trim ring using (3) stainless steel captive fasteners.

Mounting: Provided with a 1/2" I.P.S. stainless steel nipple for direct attachment to cast boxes or other accessories.

Electrical: 73.5W LED luminaire, 83 total system watts, -30°C start temperature. Integral 120V through 277V electronic LED driver, 0-10V dimming. LED module(s) are available from factory for easy replacement. Standard LED color temperature is 4000K with an >80 CRI. Available in 3000K (>80 CRI); add suffix K3 to order.

Note: LEDs supplied with luminaire. Due to the dynamic nature of LED technology, LED luminaire data in this catalog is subject to change at the discretion of BEGA-US. For the most current technical data, please refer to www.bega-us.com.

Finish: All BEGA standard finishes are polyester powder coat with minimum 3 mil thickness. These luminaires are available in four standard BEGA colors: Black (BLK); White (WHT); Bronze (BRZ); Silver (SLV). To specify, add appropriate suffix to catalog number. Custom colors supplied on special order.

CSA certified to U.S. and Canadian standards for wet locations. Protection class IP65.

Weight: 5.0 lbs.

Type: _____
BEGA Product: _____
Project: _____
Voltage: _____
Color: _____
Options: _____
Modified: _____

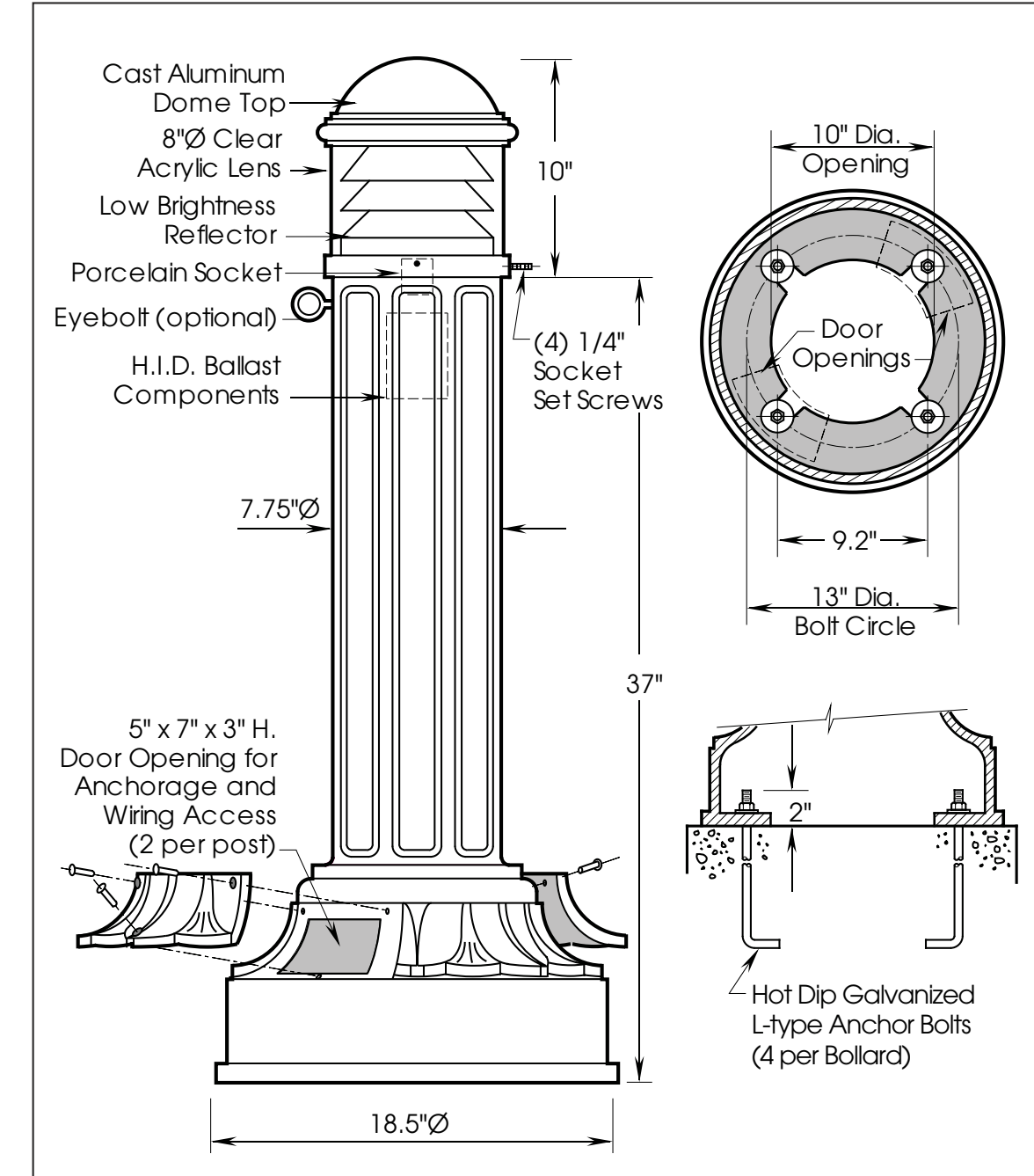
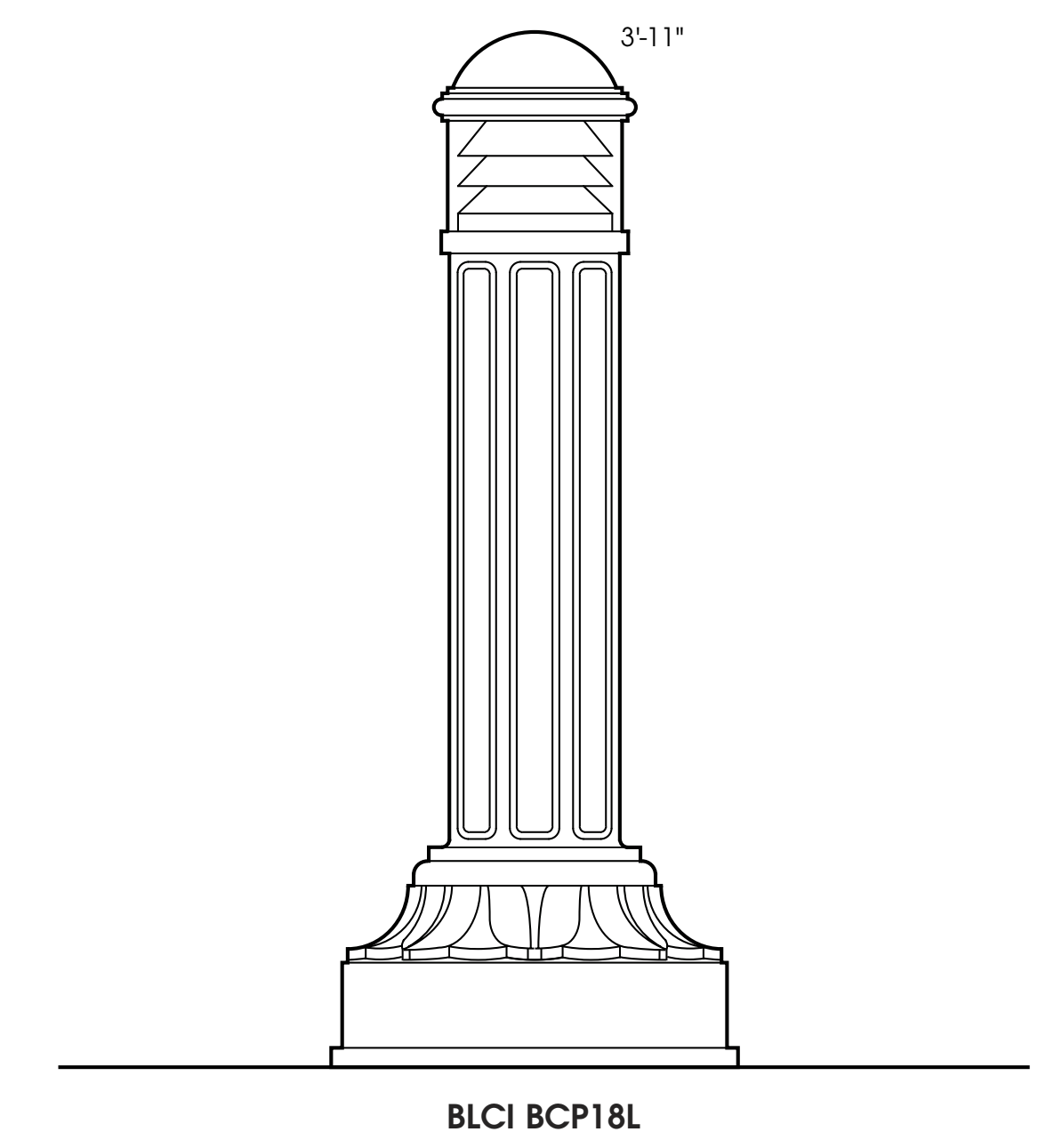
Compact floodlight - narrow beam		180° glare shield		360° glare shield		louver		flat beam	
Lamp	β	A	B	C	758	721	775	065	
7794LED	73.5 W LED	22°	9 1/8"	11 1/8" 9"					
β = Beam angle									



BEGA-US 1000 BEGA Way, Carpinteria, CA 93013 (805) 684-0533 FAX (805) 566-9474 www.bega-us.com
©copyright BEGA-US 2014 Updated 10/14

PROPOSED FACADE LIGHT FOR LIGHT POLE

**CENTRAL PARK Series
Cast Iron Lighted Bollard**



B-25

PROPOSED BOLLARD

SPECIFICATIONS

DESCRIPTION The bollard shall be cast iron construction with a classic decorative base. The bollard shall be provided with an optical assembly consisting of a lens and reflector assembly providing an I.E.S. Type V distribution, and a cast aluminum dome top.

MATERIALS The bollard material shall be ASTM-A48 Class 30 cast iron. The optical assembly top shall be heavy-wall cast aluminum produced from certified ASTM 356.1 ingot per ASTM B179-95a or ASTM B26-95. The castings shall be formed true to the pattern with complete detail. The lens shall be acrylic and the reflector shall be anodized aluminum. All exposed hardware shall be tamper resistant stainless steel. Anchor bolts to be completely hot-dip galvanized.

CONSTRUCTION The bollard shall be made from a one-piece casting. The optical assembly shall be attached to the bollard with four tamper resistant set screws.

DIMENSIONS The bollard shall be 3'-11" in height with an 18.5" diameter base, a 7.75" diameter shaft and an 8" diameter lens.

INSTALLATION The bollard shall be provided with four L-type anchor bolts to be installed on a 13" diameter bolt circle. Two doors shall be provided in the base for anchorage and wiring access.

LIGHT SOURCE The lighted bollard shall be furnished with an H.I.D. ballast and socket assembly. Sockets shall be glazed porcelain medium base, with a copper alloy nickel plated screw shell and center contact. The ballast shall be a core and coil, high power factor, regulating type. The bollard shall be UL listed and labeled as suitable for wet locations.

For finish specifications and color options, see "Finish" section in catalog.

ORDERING INFORMATION Choose the boldface catalog nomenclature that best suits your needs and write it on the appropriate line.

Example: **BLCI BCP18L 70M MED ACS GR5 120 PEB1 ANBK**

Series	Lens Type	Voltage	Options
BLCI BCP18L	ACS Acrylic, Clear Smooth (std) AWS Acrylic, White Smooth	120 208 240 277 347 480 TB	EBB³ One eyebolt 2EBB³ 2 eyebolts PEB1 Photocell button 120v PEB2 Photocell button 208,240,277v FG-B GFCI Receptacle inside base
Wattage/Lamp ⁴		Distribution	
50M MED	50 watt Metal Halide	(blank) Std., Low Brightness Reflector, Type V	
70M MED	70 watt Metal Halide	GR5 Glass Refractor, Type V	
35S MED	35 watt High Pressure Sodium	GR3 Glass Refractor, Type III	
50S MED	50 watt High Pressure Sodium		
70S MED	70 watt High Pressure Sodium		
42TRT	42 watt compact fluorescent		
Finish ¹			
ANBK Black			
ANDB Dark Bronze			
ANDG Dark Green			
ANVG Verde Green			
ANPP Prime Painted			
CM Custom Match			
CS Custom Select RAL colors			

NOTES:
1. For finish and color options, see Finish section in catalog.
2. Multi-Tap Ballast (120,208,240,277V). For wattages under 70W, 70M or 100W contact ASL for availability.
3. For information on specifying correct orientation, see Orientation Guide in the back of the Accessories section in the catalog.
4. For other wattage choices consult factory.

ANTIQUE Street Lamps™
2011-B-W. Rundberg Ln. • Austin, TX 78758 • ph(800)410-8899 • fax(512)977-9622